



# S.E.Asia : Kingstec (Singapore) Pte Ltd

66 Tannery Lane,  
Tel (65) 6456 8630

# 04 - 09 Sindo Building,  
email- kingstec@pacific.net.sg

Singapore 347805  
Fax (65) 6234 2969

**Type SB/V – 3-effective smoke turns – Wet back  
Capacity :2.000 to 20.000 ka/h saturated steam**



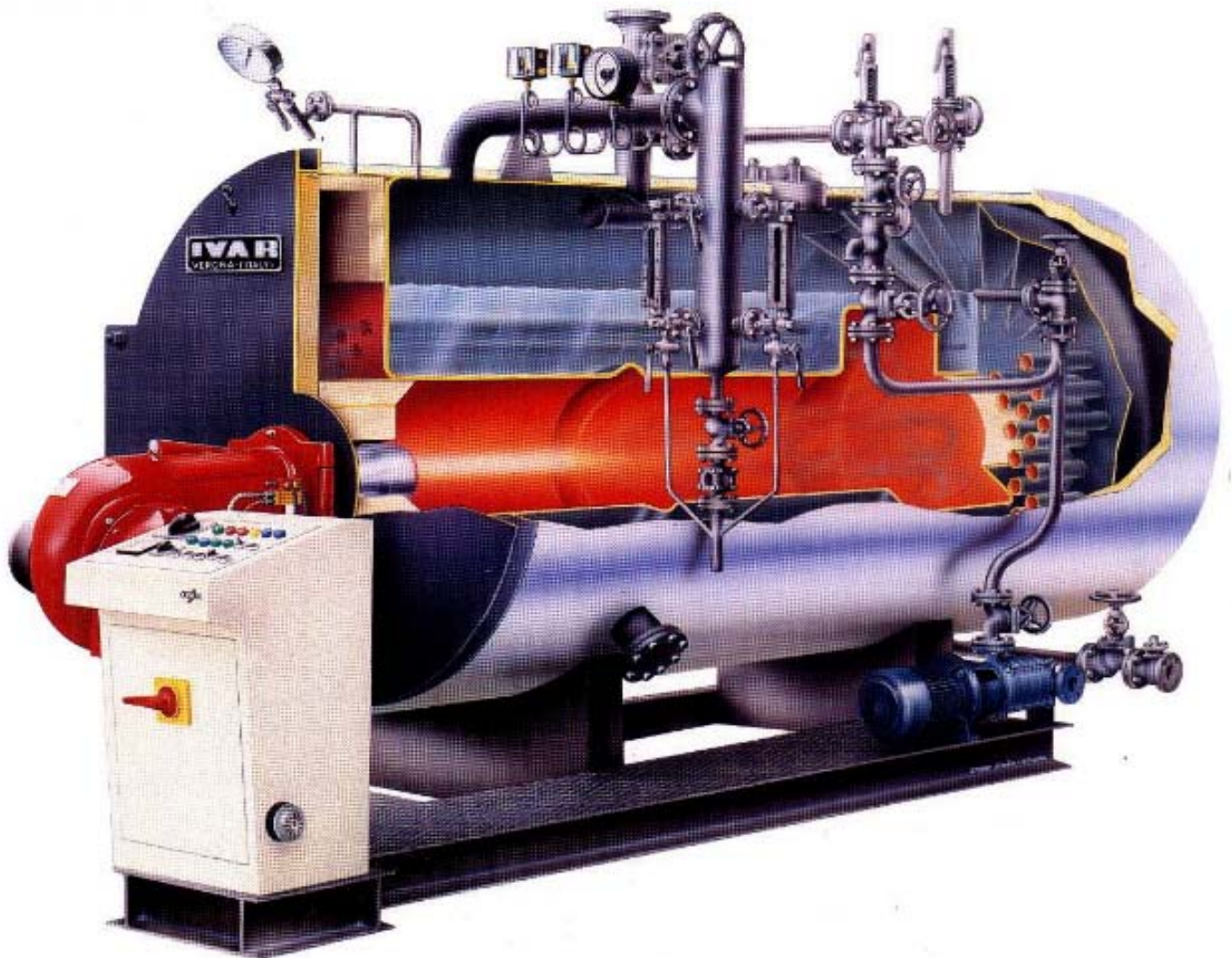
GENERATORE DI VAPORE  
STEAM BOILER

S E R I E  
**SB/V**



TUV

La tecnologia e l'esperienza al servizio della qualità  
*The technology and the experience at service of quality*



The SB/V boiler for the production of saturated steam is of the pressurized type with a large volume, at smoke tubes, three effective turns, with back inversion chamber completely wet.

The tube plates are cold turned and tempered by a suitable heat treatment in an annealing furnace.

The building and the testing are according to the I.S.P.E.S.L. rules.

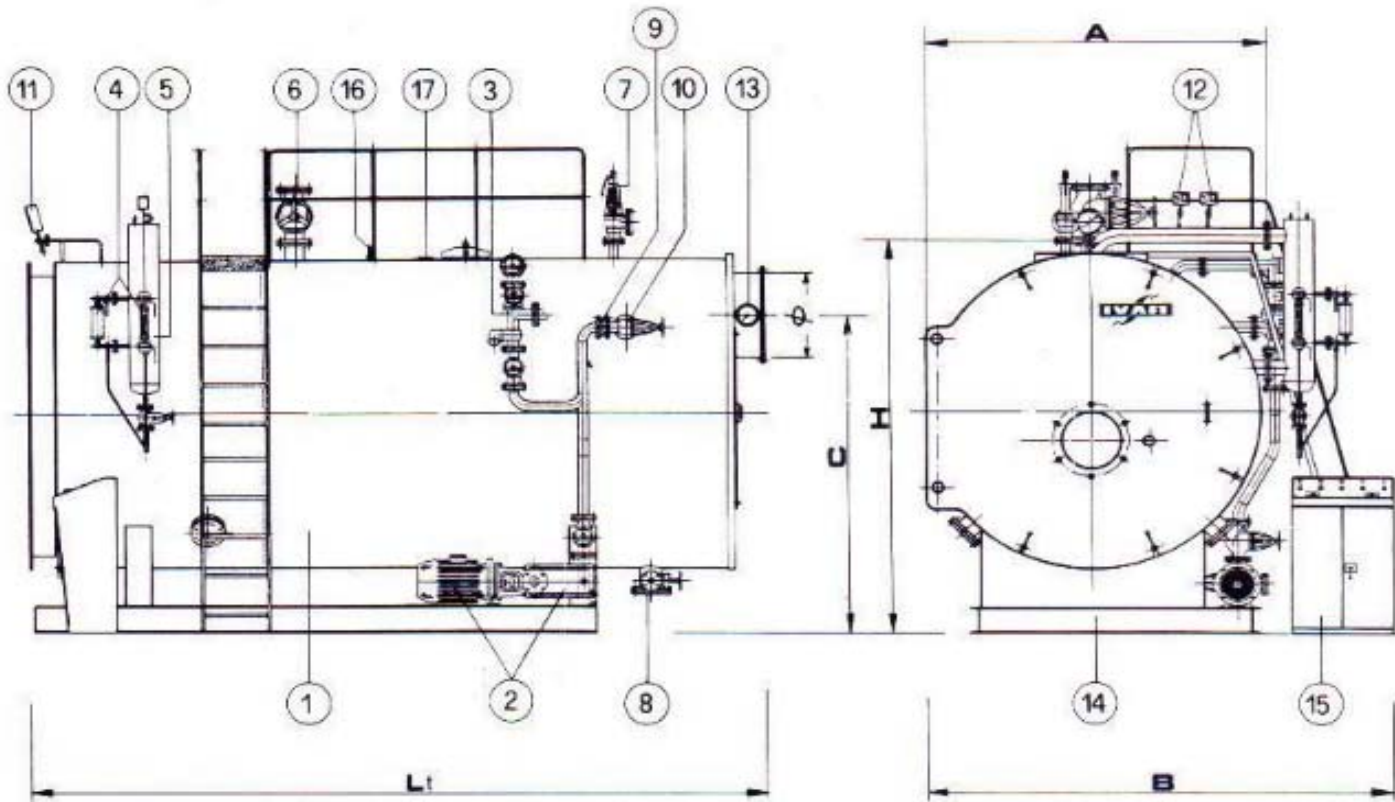
Normally, the generator is supplied in "package" version and it is also equipped with the accessories and the devices for the automatic working, in conformity with the laws in force.

Particular care has been placed for the smoke side maintenance which is made easier thanks to the front and back doors : infact they allow an accessibility to the tube nest as well as to the combustion chamber.

At request we can also supply the boiler with a comburent air preheater or with an economizer for the feeding water preheater in way to have a thermal efficiency over 93%.

The SB/V boiler can also be provided with a steam superheater so that we can obtain high temperatures without modify the structure.

# Type SB/V



- |                                |                                     |                              |
|--------------------------------|-------------------------------------|------------------------------|
| 1. Boiler shell                | 7. Safety valve                     | 13. Smoke outlet thermometer |
| 2. Feeding pump                | 8. Discharge valves                 | 14. Base Frame               |
| 3. Steam injector              | 9. Check valve                      | 15. Control Panel            |
| 4. Level Indicator             | 10. Feeding unit                    | 16. Electronic safety probe  |
| 5. Auto. probe level regulator | 11. Manometer                       | 17. I.S.P.E.S.L. plate       |
| 6. Steam intake                | 12. Safety and duty pressure switch |                              |

Type		Model											
SB/V		2	3	4	5	6	7	8	10	12	15	18	20
Nominal capacity	KW	1385	2077	2769	3462	4155	4847	5540	6923	8308	10468	12462	13850
	kcal x1000	1.191	1.786	2.381	2.381	2.977	3.572	4.764	5.953	7.144	9.001	10.717	11.911
Furnace capacity	KW	1567	2334	3112	3891	4668	5446	6226	7780	9335	11763	14005	15565
	kcal x1000	1.388	2.007	2.675	3.345	4.014	4.682	5.353	6.689	8.027	10.114	12.044	13.383
Steam production * kg/h		2000	3000	4000	5000	6000	7000	8000	10,000	12,000	15,000	18,000	20,000
Max. design pressure Bar		17.6									14.7		
Combustion chamber pressure mbar		3.5	5.5	6	7.5	8	8.5	10	7.5	7.8	8	9	11
Water content level													
Full level	dm3	5180	7910	9060	10700	11235	12460	13450	18920	19660	25350	27500	30450
Nominal	dm3	4300	6565	7520	8880	9325	10340	11160	15700	16320	19645	21450	23200
Dimension	(mm)												
	A	1890	2150	2250	2330	2400	2500	2500	2750	2850	3130	3250	3300
	B	2400	2650	2750	2850	2900	3000	3000	3250	3350	3650	3750	3800
	H	2460	2720	2820	2900	2970	3070	3070	3320	3420	3700	3820	3900
	Lt	4150	4650	5050	5600	5600	5750	6200	6800	7150	7260	7650	8200
c	1990	2250	2320	2350	2420	2470	2470	2700	2750	2980	3050	3150	
Connections													
Stem intak	DN	65	100	100	125	125	125	125	150	150	200	200	200
Discharge	DN	40	40	40	40	40	40	40	40	40	40	40	40
Stack	Ø mm	400	400	450	550	550	650	650	700	800	900	1000	1100
Nett weigh	kg	905	905	1330	1330	1870	1870	2230	2710	3220	3830	4440	5280

\* feed water 70°C Pressure 11.7 bar



Detail of the combustion chamber



Detail of the tube nest welding



Detail of the welding radiographs checking



IVAR PRODUCTION PLANT, ITALY



## Different Installations

